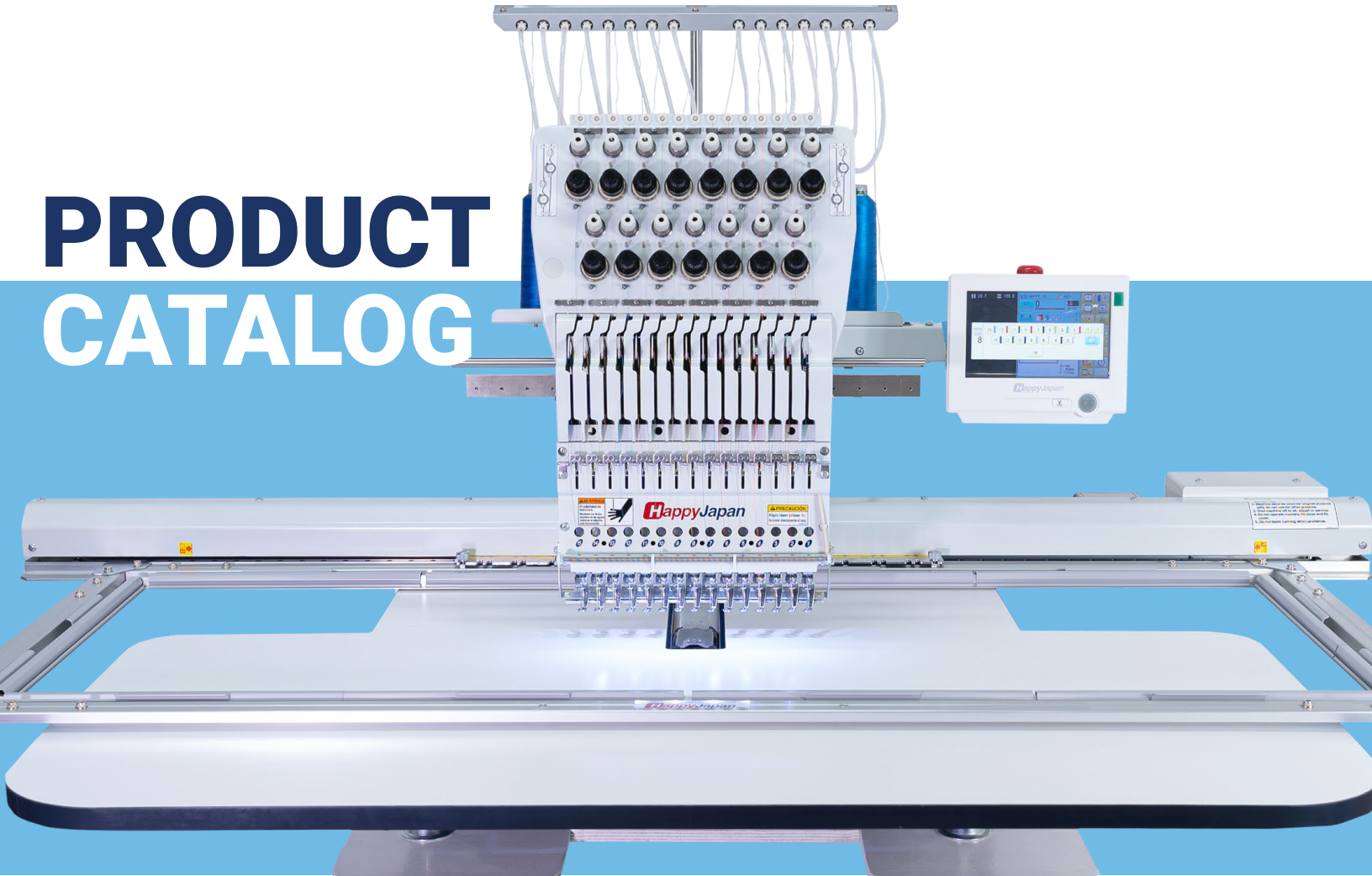


Technology and Beyond

HappyJapan

Official Distributor

PRODUCT CATALOG



CARALB 
EMBROIDERY MACHINES
www.happyjapanusa.com

HCH-701P-30



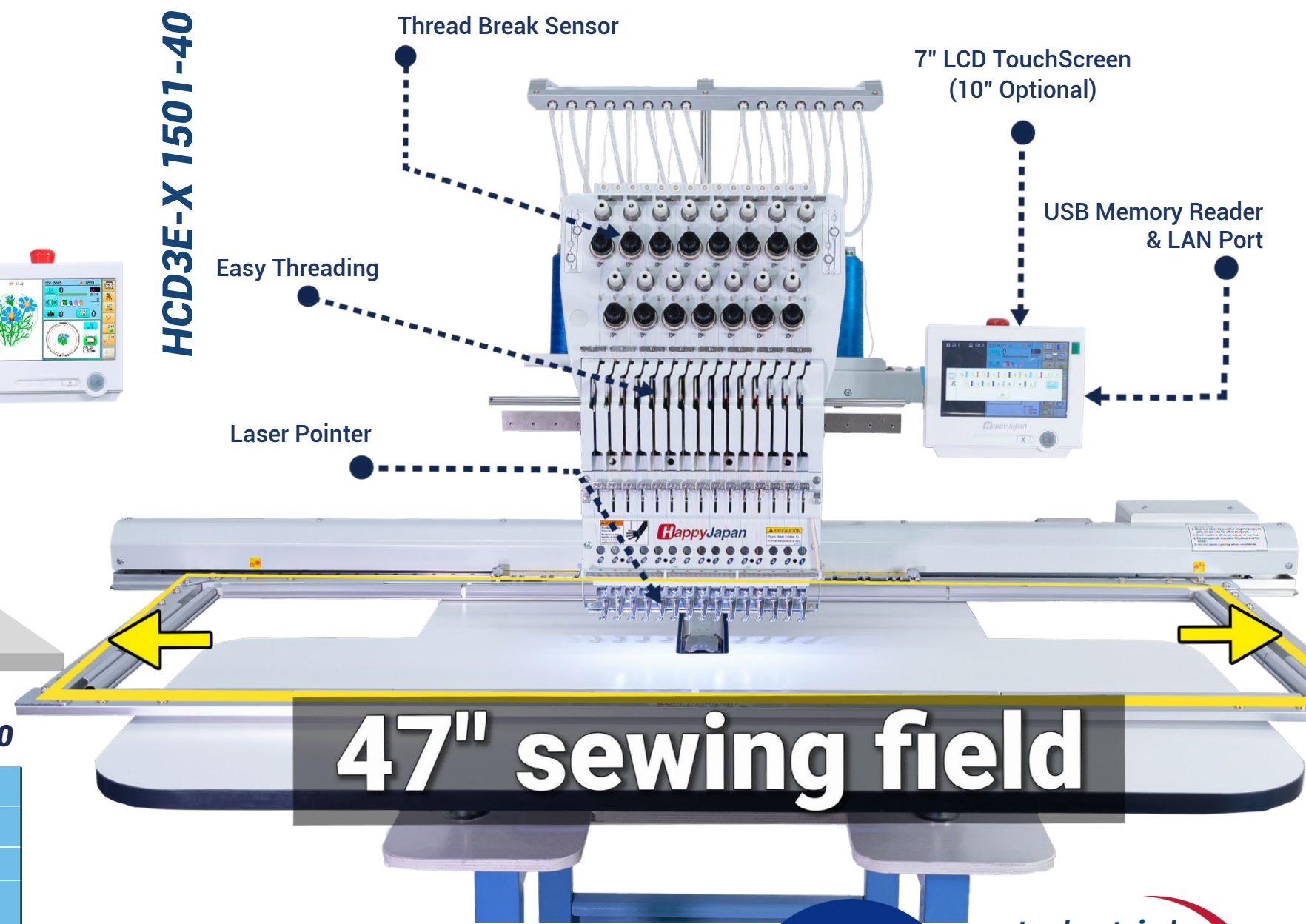
12" x 12" sewing field

HCS2-1201-30



12" x 12" sewing field

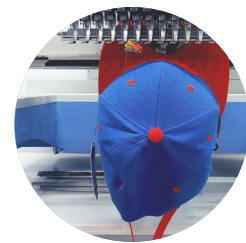
HCD3E-X 1501-40



47" sewing field

	HCH-701P-30	HCS2-1201-30	HCD3E-X 1501-40
NEEDLES	7	12	15
MAX. SEWING FIELD	12" x 12"	12" x 12"	15.7" x 47"
CAP SEWING FIELD	2.6" x 11.4"	2.6" x 11.4"	3.2" x 14.2"
MAX. SPEED (S.P.M.)	1000 850 (cap)	1000 850 (CAP)	1200 1000 (CAP)
STITCH WIDTH	0.1 - 12.7 mm	0.1 - 12.7 mm	0.1 - 12.7 mm
MEMORY	40 Million Stitches 3,000 Designs	40 Million Stitches 3000 Designs	40 Million Stitches 3000 Designs
POWER SUPPLY	100-120V 200-240V	100-115V 200-230V	100-115V 200-230V
WEIGHT	93 lbs	93lbs	242 lbs.
DIMENSION (L x W x H)	25.3" x 29.3" x 28.9"	25.3" x 29.3" x 28.9"	33.3" x 32" x 34.3"

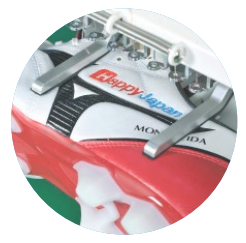
OPTIONAL SYSTEMS



Cap



Sock



Shoe

SOLID STEEL NEEDLE BARS

7 YEAR WARRANTY

Industrial Machine 24/7

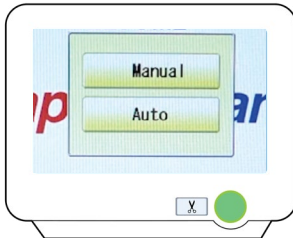


3X MOTOR VS. COMPETING BRANDS

Technology and Beyond

HappyJapan

Industrial Embroidery Machines, 100% Made in Japan



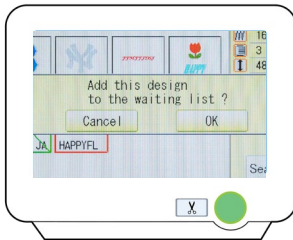
Rotary hook and thread catcher auto adjustment.



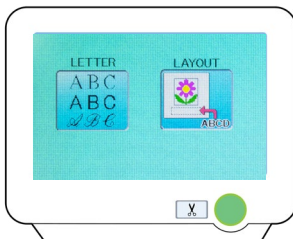
On-screen help graphics, 40 Million stitch memory.



Customize your Menu to the Production Flow



Prepare other jobs in the panel while embroidering.



Customize, edit, join logos and texts from the screen.

- **SAVE STITCH:** Save the progress of your current embroidery and start a completely new one.
- Embroidery Heads with solid steel bars (in HCD & HCU).
- Bobbin thread alert before job ends.



Industrial Machine

24/7

CARALB 
EMBROIDERY MACHINES



1-(800) 675-2704



www.happyjapanusa.com



588 Explorer St.
Brea, California, 92821